



شركة خليفة عبد اللطيف الملحم المحدودة للمقاولات
Khalifa A. Al Mulhem Contracting Co. Ltd





KAMCO at a Glance



Oil & Gas



Petrochemical Plants



Industrial Manufacturing



Power & Energy



Infrastructure



Commercial Facilities



**Established:
1984**

**Projects Executed:
Over 8 Billion SAR**



**Workforce:
1,800+ Employees**



WHO WE ARE

KAMCO (Khalifa A. Al-Mulhem Co. Ltd.) is a leading Saudi contracting and engineering company specialized in industrial, petrochemical, infrastructure, Buildings and Commercial Projects.

With decades of proven performance, we continue to deliver high-quality, safe, and efficient construction solutions aligned with global standards.

Our success is driven by our strong engineering capabilities, skilled manpower, and long-term partnerships with world-class EPC contractors and industrial clients.

KAMCO builds with integrity, precision, and commitment to excellence.



A Message from Our Founder **Khalifa A. Al Mulhem**

The foundation of any great structure is not just the concrete and steel, but the vision and commitment of the people who build it. For over 40 years, I have dedicated my career to the construction industry, witnessing its evolution and recognizing its immense potential. This journey, rooted in a deep understanding of every facet of the building process, from Civil works to specialized Mechanical, Electrical, HVAC, and Firefighting systems, has been the driving force behind our company.

I founded this company with a singular, unwavering belief: a desire to bring a higher standard of quality to the local market. This was not merely a business decision, but a personal commitment to excellence. We saw an opportunity to move beyond conventional practices and establish a new benchmark for project delivery, ensuring that every structure we build is a testament to durability, efficiency, and meticulous craftsmanship.

The Vision for Tomorrow

Looking ahead, our vision is clear and ambitious: to be the regional leader in sustainable construction services.

The future of construction is inextricably linked to sustainability. We are committed to pioneering practices that minimize our ecological footprint, from utilizing green materials and optimizing energy consumption to implementing advanced waste reduction strategies. Our goal is to not only build the infrastructure of tomorrow but to do so responsibly, ensuring a healthier planet for future generations.

We are dedicated to continuous improvement, investing in the latest technologies and the development of our expert teams. As we grow, we will remain focused on delivering integrated, high-quality solutions that exceed client expectations and contribute positively to the communities we serve.

I invite you to partner with us as we build a more sustainable and structurally sound future, one project at a time.





A Message from the Chairman
Abdulatif Al Mulhem

For over four decades, KAMCO (Khalifa A. Al Mulhem Co. Ltd.) has been a steadfast partner in the development of the Kingdom of Saudi Arabia's most critical infrastructure. Since our founding in 1984, our journey has been one of unwavering commitment to excellence, guided by a vision to build not just structures, but the foundation of the nation's industrial future.

Our legacy is defined by scale and impact. With over 40 years of experience and a portfolio valued at more than 8 Billion Saudi Riyals across 200 successful projects, we have proven our capability to deliver complex, large-scale Engineering, Procurement, and Construction (EPC) solutions. Our success is rooted in our deep involvement across strategic sectors, from Oil & Gas and Petrochemicals to Power and essential Infrastructure, serving esteemed clients such as Saudi Aramco, SABIC, and the Saudi Electricity Company.

As we look ahead, our focus remains firmly aligned with the ambitions of Saudi Vision 2030. We are strategically positioned to embrace the next generation of mega-projects, driving innovation in our multi-disciplinary services, which span Civil, Mechanical, Electrical, HVAC, and Fire Fighting systems. Our commitment is to sustainable growth, operational integrity, and maintaining the highest standards of quality and safety that have earned us the trust of the Kingdom's leading organizations.

We are proud of our past, confident in our present, and profoundly optimistic about the future. We invite our partners and clients to continue this journey with us as we contribute to a structurally sound and prosperous future for Saudi Arabia.





A Message from the Managing Director

Mohammed Al Mulhem

While the Chairman sets the strategic direction, my focus, and the focus of our entire team, is on the meticulous execution and operational excellence that transforms vision into reality. At KAMCO, we understand that our reputation is built on the successful delivery of every single project.

Our strength lies in our people and our integrated capabilities. We command a dedicated team of over 1,800 professionals and skilled personnel, augmented by strategic partnerships, ensuring we have the capacity and expertise to handle projects of any complexity. Our comprehensive service portfolio, spanning EPC, Civil, Mechanical, Electrical, HVAC, Fire Fighting, and Pipeline construction, allows us to act as a single, reliable partner for our clients, ensuring seamless integration and efficiency from concept to commissioning.

Operational excellence at KAMCO is non-negotiable, and it is anchored by our unwavering commitment to Safety and Quality. Our dedication to a zero-incident culture is evidenced by our track record, including achieving milestones on major projects. These achievements are a direct result of our rigorous quality management systems and the professionalism of our workforce.

We are proud to be the trusted delivery partner for the Kingdom's most prestigious clients, including Saudi Aramco, SABIC, and Ma'aden. Moving forward, we will continue to invest in our team, adopt the latest construction technologies, and uphold the highest standards of integrity to ensure that every project we undertake not only meets but exceeds the expectations of our partners. We are committed to operational superiority as we help build the future of Saudi Arabia.





CEO Message

Yasser Bakir

As we look back on our journey in the Kingdom of Saudi Arabia, we take great pride in the role our company has played in supporting the nation's industrial growth. For years, we have been a trusted partner in delivering complex Oil & Gas and Industrial projects, that demanded precision, discipline, innovation, and uncompromising safety and quality. These values have shaped who we are, and they continue to guide every step we take.

Today, we stand at an exciting point in our expansion. In alignment with the Kingdom's Vision 2030 and the rapid transformation taking place across all sectors, we are expanding our expertise to include commercial buildings, retail destinations, and modern urban developments. This transition is not a departure from our heritage, but an evolution, extending the same engineering excellence and project reliability that built our reputation into new sectors that support the Kingdom's vision for a vibrant, diversified future.

Our commitment remains unchanged:

- ◆ Delivering projects with the highest standards of safety and quality
- ◆ Building long-term partnerships based on trust, transparency, and performance
- ◆ Investing in innovation, digital construction, and sustainable building practices
- ◆ Developing Saudi talent and contributing to the national economy

As CEO, I am proud of our team, their dedication, expertise, and passion are the foundation of our success. Together, we are building not just projects, but lasting value for our clients, our communities.

We look forward to continuing this journey of growth, excellence, and impact.





OUR MISSION

To provide high-quality, safe, and efficient construction solutions that meet the evolving needs of our clients while supporting the Kingdom's industrial development.



OUR VISION

To be the leader of industrial and construction industry in Saudi Arabia, delivering world-class engineering and contracting services.



OUR CORE VALUES



Zero-harm commitment
at all work sites

SAFETY

QUALITY

High standards in
every project



RELIABILITY

Consistent delivery, on
time and within budget



We build on trust and
transparency

INTEGRITY

INNOVATION

Engineering solutions
aligned with modern
technologies





OUR STRENGTHS

KAMCO's competitive edge is built on Four decades of hands-on experience delivering industrial, petrochemical, and infrastructure projects across Saudi Arabia.

Our operational strength lies in our ability to mobilize large teams, execute complex scopes, and maintain consistent quality, safety, and engineering precision.

◆ Key Strengths

- Proven track record with mega industrial and energy sector clients
- Strong engineering and technical expertise
- Large multi-disciplinary workforce (1,800+ employees)
- Ability to execute EPC support packages for major international contractors
- In-house capabilities across civil, mechanical, electrical, instrumentation , steel works and Piping
- Reliable project delivery within schedule and budget
- Solid financial position enabling rapid and large-scale mobilization

◆ Project Execution Approach

Our methodology integrates detailed planning, resource mobilization, coordinated site execution, strict QA/QC controls, and comprehensive HSE management, ensuring excellence from groundbreaking to commissioning.

KAMCO is built to deliver projects of any size with precision and reliability.



QUALITY & COMPLIANCE

KAMCO maintains strict compliance with international quality and safety standards. Over the years, the company has earned numerous certifications that demonstrate our commitment to excellence.

Certifications

- ◆ ISO 9001 – Quality Management
- ◆ ISO 14001 – Environmental Management
- ◆ ISO 45001 – Occupational Health & Safety
- ◆ Saudi Chamber of Commerce Certification
- ◆ Zakat & VAT Registration Certificates

Quality Commitment

We maintain robust quality assurance processes from engineering through construction, ensuring every project meets international and client-specific standards.





HEALTH, SAFETY & ENVIRONMENT (HSE)

- Safety is a core value at **KAMCO**.
Our team has achieved multiple safety milestones and recognitions from major clients.



HSE ACHIEVEMENTS

- Multiple Zero Injury project awards
- More than 4.5 million safe man-hours on key industrial sites
- Recognitions from SABIC, ARAMCO, TASNEE, and others
- Dedicated HSE officers
- Certified LEAD Engineers



OUR SAFETY PHILOSOPHY

- Zero-harm work culture
- Continuous training and toolbox talks
- Strict compliance with client HSE systems
- Preventive risk management
- Regular audits and safety drills

Our people's safety is at the heart of our operations.





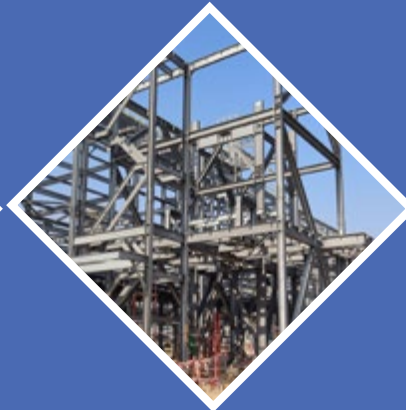
OUR SERVICES



**CIVIL &
ARCHITECTURAL
WORKS**



**MECHANICAL
CONSTRUCTION**



**STEEL
CONSTRUCTION**



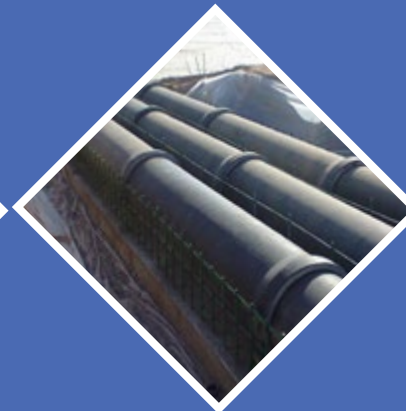
**ELECTRICAL &
INSTRUMENTATION
(E&I) SERVICES**



HVAC SYSTEMS



**FIRE FIGHTING
SYSTEMS**



**PIPELINE &
INFRASTRUCTURE**



**METERING SKIDS
ALDERLEY**



CIVIL & ARCHITECTURAL WORKS

KAMCO delivers high-quality civil construction services for industrial, petrochemical, commercial, and infrastructure projects.

Our civil teams ensure precision, durability, and compliance with international and client-specific standards.

CAPABILITIES

- ◆ Early Site Preparation
- ◆ Excavation & Backfilling
- ◆ Piling & Foundation Works
- ◆ Reinforced Concrete Structures
- ◆ Substation Buildings
- ◆ Industrial Buildings
- ◆ Commercial Facilities
- ◆ Architectural Finishing Works
- ◆ External Works (Landscaping and Hardscaping), Civil Infrastructure.
- ◆ Showrooms & Administrative Buildings





MECHANICAL & PIPING CONSTRUCTION

KAMCO provides comprehensive mechanical construction services essential to industrial and Oil & Gas facilities. Our teams deliver precise, safe, and efficient installations.

CAPABILITIES

- ◆ Construction of Industrial Plants
- ◆ Fabrication & Erection of Piping Systems
- ◆ Erection of Steel Tanks
- ◆ Erection of Turbines
- ◆ Boilers Installation
- ◆ Static & Rotary Equipment Erection
- ◆ Pipeline Construction Services
- ◆ Heavy Lifting Operations
- ◆ Shutdown / Turnaround Support





ELECTRICAL & INSTRUMENTATION (E&I) SERVICES

KAMCO's E&I division delivers advanced electrical solutions, instrumentation systems, and controls for industrial applications.

CAPABILITIES

- ◆ Medium Voltage & Low Voltage Installations
- ◆ Power Cabling
- ◆ Control & Signal Cabling
- ◆ Leak Detection System
- ◆ Security Access Control System (SACS)
- ◆ Fiber Optic Cabling
- ◆ DCS & Control System Support
- ◆ Power Distribution Systems
- ◆ Fire & Gas Detection Systems
- ◆ Integrated BMS System
- ◆ Lighting Systems
- ◆ Earthing & Lightning Protection
- ◆ Substation Electrical Works
- ◆ Control devices (Building Management System BMS)





STEEL CONSTRUCTION

KAMCO provides full steel structure services, from design and fabrication to erection, supporting industrial and commercial facilities across Saudi Arabia.

CAPABILITIES

- ◆ Temporary Facility Structures
- ◆ Steel Structure Fabrication and Design
- ◆ Steel Structure Erection
- ◆ Structural Modifications & Retrofits
- ◆ Platform & Access Structures
- ◆ Industrial Sheds & Warehouses





HVAC SYSTEMS

KAMCO offers complete HVAC services supporting large-scale industrial and commercial buildings. Our expertise spans from design engineering to full system commissioning.

CAPABILITIES

- ◆ System Design & Engineering
- ◆ Load Calculations & Equipment Sizing
- ◆ Ductwork Fabrication
- ◆ Pipework Installation, Pumps Rooms.
- ◆ Chillers / AHU / FCU/ Package Units Installation, HVAC Control Works
- ◆ Cooling Towers
- ◆ Equipment Testing & Commissioning
- ◆ Refrigerant Charging & Air Balancing
- ◆ As-Built Documentation & Handover





FIRE FIGHTING SYSTEMS

KAMCO constructs a wide range of fire protection systems compliant with international codes, HCIS requirements, and UL/FM certified materials.

CAPABILITIES

- ◆ FEED & Detailed Engineering Support
- ◆ Gas Suppression System.
- ◆ Sprinkler System.
- ◆ Deluge System.
- ◆ Foam System.
- ◆ Underground Fire Water Networks (HDPE, RTR, GRV)
- ◆ Pump Rooms & Fire Water Tanks
- ◆ Testing & Commissioning of Complete Systems





PIPELINE & INFRASTRUCTURE

KAMCO executes medium and large-scale pipeline and infrastructure works essential for industrial and municipal development.

CAPABILITIES

- ◆ Pre-Construction & Engineering Planning
- ◆ Right-of-Way Preparation
- ◆ Pipeline Installation (Laying, Welding, Coating)
- ◆ Utility Networks (Water / Sewer / Industrial Drainage/GAS)
- ◆ Power & Communication Duct Banks
- ◆ Backfilling & Site Restoration
- ◆ Commissioning & System Start-up
- ◆ Roadworks, Curbs, Asphalt, Interlock
- ◆ Directional Drilling





EQUIPMENT & RESOURCES

KAMCO maintains a large inventory of construction equipment and machinery, ensuring the capability to execute large-scale industrial and infrastructure projects efficiently.

Key Resources Include:

Cranes (Crawler, Mobile, Tower)

Excavators & Wheel Loaders

Skid Loaders & Backhoe Loaders

Heavy Trucks & Trailers

Tankers (Water & Fuel)

Welding Machines

Generators

Air Compressors

Concrete Mixers & Pumps

Manlifts & Forklifts





MANPOWER STRENGTH

KAMCO employees are over 1800+ skilled professionals across various engineering, construction, and support disciplines.

Workforce Breakdown:

- ◆ Project Management Teams Direct (Skilled, Semi Skilled & Support) , workers (CSA, E&I, MECH, HVAC)
 - ◆ Engineers
 - ◆ Site Supervisors
 - ◆ HSE Officers
 - ◆ Quality Inspectors
 - ◆ Skilled Technicians
 - ◆ Welders & Fabricators
 - ◆ Pipe Fitters
 - ◆ Heavy Equipment Operators



Organizational Capability

- ◆ Multi-disciplinary engineering support
- ◆ Ability to mobilize for industrial projects
- ◆ Strong management and control systems



ALDERLEY SAUDI ARABIA



Metering Skids

Integrated engineering solutions for the Kingdom's oil, gas, water, and petrochemical sectors, with a strong focus on local manufacturing and innovation.

40% owned by **KAMCO**, Alderley Saudi Arabia is a key player in delivering cutting-edge engineering and manufacturing solutions tailored to the Kingdom's oil and gas sector. Operating from state-of-the-art facilities located in Dammam's First and Second Industrial Cities, the company offers the region's most comprehensive systems integration capabilities, with a strong focus on performance, reliability, and localization.

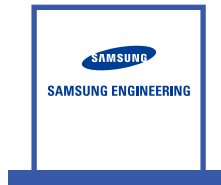
Their diverse service offering includes high-performance metering solutions for accurate hydrocarbon measurement, modular wellsite skids for streamlined production, wellhead control panels that ensure operational safety, water treatment systems designed to meet environmental standards, as well as loading skids and advanced control systems for optimized energy operations. In addition, Alderley provides comprehensive field services and hands-on operator training to support long-term system performance.

As an independent systems integrator, Alderley Saudi Arabia is committed to delivering technology-neutral solutions that are best suited to each client's specific needs. In alignment with Vision 2030's focus on localization, industrial innovation, and sustainability, Alderley's active participation in the In-Kingdom Total Value Add (IKTVA) program underscores its role in developing local capabilities and strengthening national supply chains.



OUR MAJOR CLIENTS

KAMCO has established long-term relationships with leading industrial and energy companies in Saudi Arabia.





OUR PROJECTS

01 APOC / OSBL Project

Name of Owner: Advanced Polyolefins Industry Company (APOC)

Main Contractor: FLUOR Arabia Ltd.

Project: PC

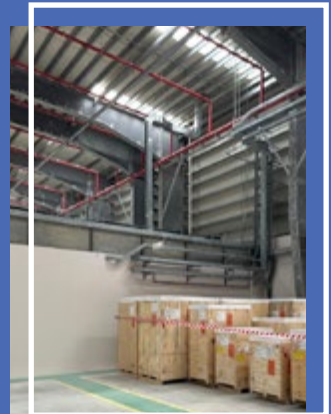
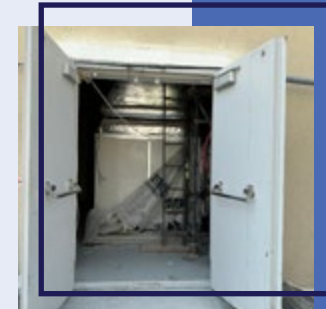
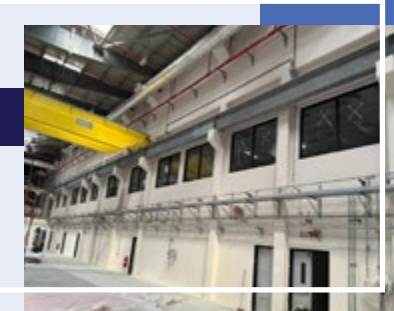
Project Duration: 2 Years

Value: 456,000,000 SAR

Scope of Work:



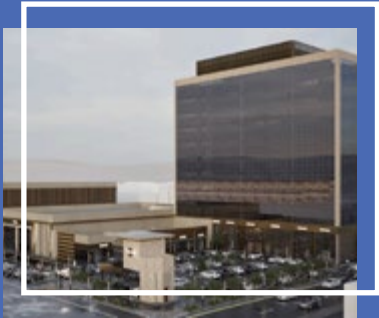
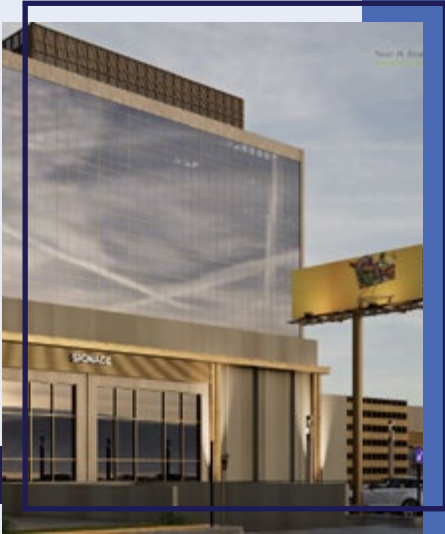
- ◆ Part engineering, Procurement and construction of multiple OSBL facilities including:
 - Warehouses (Pre-engineered, structural steel building (PEB))
 - Substations (Single story unmanned raised floor building houses 34.5KV switchgear room)
 - Gatehouse and support buildings (Cast in situ)
 - Car parking areas and guard rooms
- ◆ Civil and structural works (earthworks, foundations, concrete, backfilling)
- ◆ Architectural finishing (blockwork, plastering, painting, tiling, doors, windows)
- ◆ Mechanical works within buildings (piping, HVAC, equipment installation)
- ◆ Electrical and Instrumentation (E&I) works, internal and external (cable laying, panel installation, lighting, instrumentation, grounding, testing & commissioning)
- ◆ External and infrastructure works (asphalt, curbstone, interlock, road works, drainage, fencing)
- ◆ Hardscaping and Landscaping including irrigation network



02 Commercial Facility Dharan Project

Name of Owner: KHALIFA A. ALMULHEM Holding Company
Main Contractor: KAMCO
Project: EPC
Project Duration: 18 Monthes
Value: 100,000,000 SAR

Scope of Work:



Item	Phase	Scope of Work Description
1	Early Site Works & Utilities	Execute all initial site preparation, including clearing, grubbing, demolition (if required), mass grading, erosion control, and installation of temporary and permanent underground utilities (water, sewer, storm drainage, electrical, and communication infrastructure).
2	Foundation & Substructure	Complete all deep and shallow foundation work, including excavation, dewatering, construction of footings, foundation walls, and the ground-level slab-on-grade for the entire structure.
3	Superstructure & Decking	Erect the primary structural frame of the building, including all vertical elements (columns) and horizontal elements (beams, girders, and floor/roof decking) using the specified materials (e.g., structural steel or reinforced concrete).
4	Building Envelope & Roofing	Construct the complete exterior enclosure, including installation of exterior wall systems (e.g., curtain wall, masonry), all glazing, exterior doors, and the full roofing system to achieve a weather-tight structure.
5	MEP/FP Rough-in & Distribution	Install all major Mechanical, Electrical, Plumbing, and Fire Protection (MEP/FP) systems, including the rough-in of ductwork, piping, conduit, fire suppression lines, and primary distribution equipment throughout the building.
6	Interior Framing & Drywall	Execute all interior framing for tenant spaces and common areas, including metal stud walls, bulkheads, and soffits, followed by the installation and finishing of drywall and fire-rated assemblies.
7	Common Area Finishes & Vertical Transport	Complete all architectural finishes in the mall's common areas (corridors, atriums, restrooms), including flooring, wall finishes, ceilings, lighting fixtures, and the installation and commissioning of elevators and escalators.
8	Site Development & Landscaping	Finalize all exterior site work, including paving of parking lots and access roads, installation of site lighting, signage, hardscaping (walkways, plazas), and the execution of the final soft landscaping plan.
9	System Commissioning & Testing	Perform comprehensive testing, balancing, and commissioning of all building systems (HVAC, electrical, life safety, security, and building automation) to ensure full operational compliance with design specifications and regulatory requirements.
10	Final Inspection & Handover	Obtain all necessary final inspections, occupancy permits, and regulatory approvals, compile all close-out documentation (as-builts, O&M manuals, warranties), and formally hand over the fully operational facility to the owner.

03 AMIRAL Co Gen. Project

Name of Owner: AMIRAL

Main Contractor: SAMSUNG C&T

Project: CIVIL

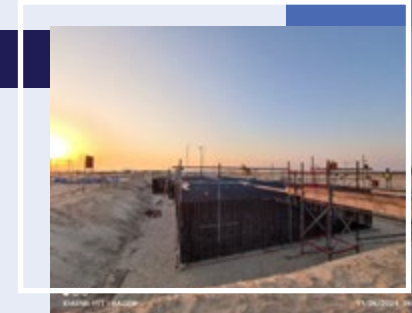
Project Duration: 2 Years

Value: 53,000,000 SAR

Scope of Work:



- ◆ Construction of Civil works for Gas Turbine Generator Foundations (GTG)
- ◆ Construction of Steam Turbine Generator Foundations (STG)
- ◆ Construction of Heat Recovery Steam Generator (HRSG) Foundations
- ◆ Construction of Wastewater Treatment (WWT) System Structures
- ◆ Execution of associated concrete and structural works for all related facilities
- ◆ Coordination with mechanical and electrical interfaces to ensure precise foundation alignment
- ◆ Compliance with high-tolerance Construction requirements for heavy industrial installations
- ◆ Site Development, Hardscaping & Concrete Paving





04 | APOC/IPA PROJECT

Name of Owner: Advanced Polyolefins Industry Company (APOC)

Main Contractor: SGC Arabia Co. Ltd.

Project: PC

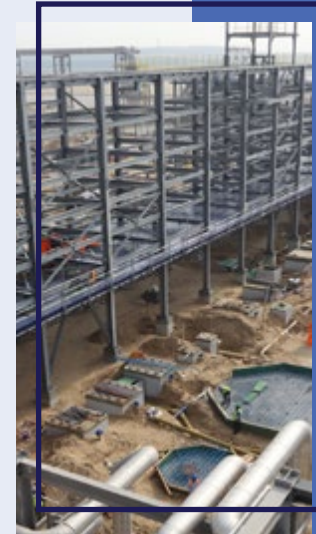
Project Duration: 2 Years

Value: 291,313,281 SAR

Scope of Work:



- ◆ Complete Civil, Structural Steel, and Architectural construction works
- ◆ Installation and insulation of Mechanical and Piping systems
- ◆ Electrical works including power distribution, lighting, and panel installation
- ◆ HVAC systems installation and commissioning
- ◆ Underground utilities and piping works (water, drainage, firefighting, and other networks)
- ◆ Firefighting systems installation including pumps, piping, and suppression systems
- ◆ Infrastructure development including roads, duct banks, and related external works
- ◆ Instrumentation and communication works (control systems, cabling, and testing)
- ◆ Full coordination and integration among all disciplines to deliver a complete turnkey project
- ◆ Installation, testing and commissioning of static and rotary equipment including heavy lifting activities



05 | Marjan Increment Program On Shore Oil Facilities - (Package 6) / Buildings

Name of Owner: SAUDI ARAMCO

Main Contractor: HYUNDAI E&C

Project: PC

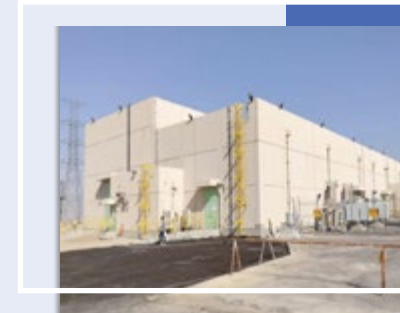
Project Duration: 3 Years

Value: 158,442,217 SAR

Scope of Work:



- ◆ Construction of multiple facilities including:
 - GIS Substation (EPC)
 - 13.8KV Substations
 - Maintenance Services Building
 - Process Interface Buildings
 - OME Buildings
 - Line Maintenance Building
 - Diesel Generator Building
 - Other associated support facilities
- ◆ Civil and structural works (earthworks, foundations, concrete, backfilling)
- ◆ Architectural finishing (blockwork, plastering, painting, tiling, doors, windows)
- ◆ External and infrastructure works (fencing)





06 APOC / Building Works - P.P. Project

Name of Owner: Advanced Polyolefins Industry Company (APOC)

Main Contractor: Tecnimont Arabia Ltd.

Project: PC

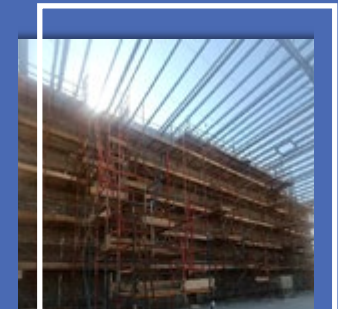
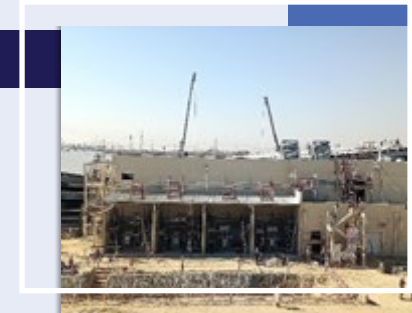
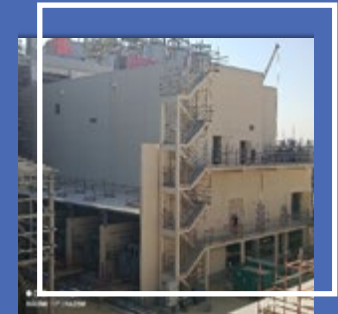
Project Duration: 2 Years

Value: 127,898,848 SAR

Scope of Work:



- ◆ Construction of multiple facilities including:
 - Substations
 - PIB Building
 - Workshop
 - Logistics and Driving Facility
 - Dispatch Building
 - Chemical Storage Warehouse
- ◆ Civil and structural works (earthworks, foundations, concrete, backfilling)
- ◆ Architectural finishing (blockwork, plastering, painting, tiling, doors, windows)
- ◆ Mechanical works (HVAC, piping, plumbing, equipment installation)
- ◆ Electrical and Instrumentation (E&I) works — internal and external (cable laying, panel installation, lighting, instrumentation, grounding, testing & commissioning)



07 Ma'aden Umm Wu'al Phosphate - Non-Process Project

Name of Owner: Ma'aden Waad Al-Shamal

Main Contractor: Fluor Arabia Ltd.

Project: EPC

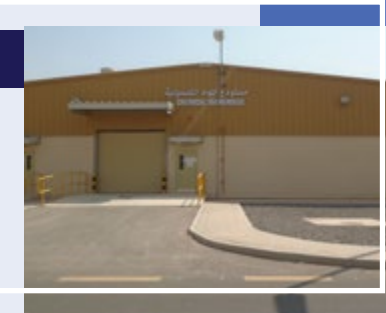
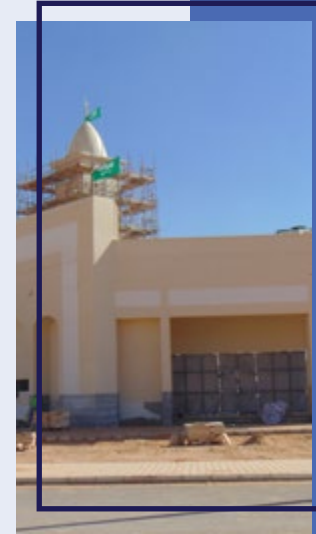
Project Duration: 3 Years

Value: 450,237,500 SAR

Scope of Work:



- ◆ Design and construction of Ma'aden Umm Wu'al Phosphate Non-Process Buildings in Turaif on LSTK (Design & Build) basis
- ◆ Scope includes complete civil, structural, architectural, mechanical, and electrical works
- ◆ Civil and structural works (site preparation, excavation, foundations, concrete structures, backfilling)
- ◆ Architectural finishing (blockwork, plastering, painting, tiling, doors, windows, roofing)
- ◆ Mechanical works (HVAC, plumbing, firefighting, equipment installation)
- ◆ Electrical and Instrumentation (E&I) works (power distribution, lighting, cable laying, panels, instrumentation, testing & commissioning)
- ◆ External and infrastructure works (roads, interlock, curbstone, drainage, fencing, landscaping)



08

(Admin Buildings Facilities, Maintenance Facilities & Product Warehouse).

Name of Owner: SAUDI KAYAN

Main Contractor: Fluor Arabia Ltd.

Project: EPC

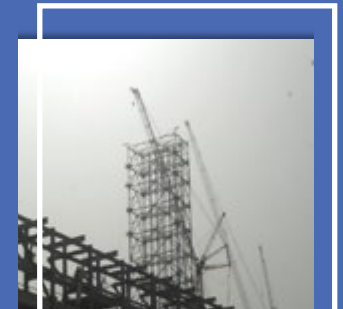
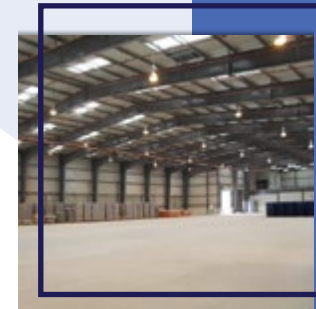
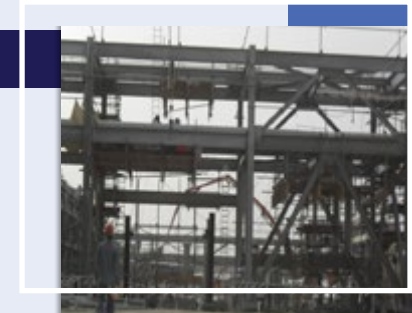
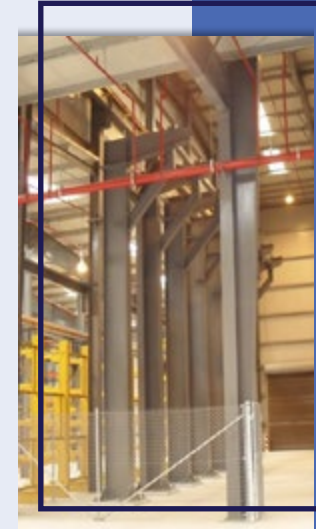
Project Duration: 3 Years

Value: 353,000,000 SAR

Scope of Work:



- ◆ Design and construction of Admin Area Buildings, Cafeteria, Mosque, and other related facilities on a Design & Build basis
- ◆ Complete scope of civil, structural, architectural, mechanical, and electrical works
- ◆ Civil and structural works (site preparation, excavation, foundations, concrete, backfilling, superstructure)
- ◆ Architectural finishing (blockwork, plastering, painting, tiling, doors, windows, roofing)
- ◆ Mechanical works (HVAC, plumbing, firefighting, equipment installation)
- ◆ Electrical and Instrumentation (E&I) works (power distribution, lighting, cable laying, panels, instrumentation, grounding, testing & commissioning)
- ◆ External and infrastructure works (roads, interlock, curbstone, drainage, landscaping, fencing)



09 Petro-Rabigh II Building Works (B4)

Name of Owner: SAUDI ARAMCO

Main Contractor: GS Engineering Construction Co.

Project: PC

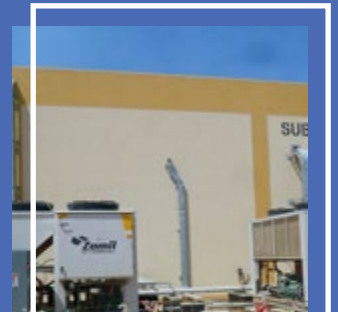
Project Duration: 2 Years

Value: 112,000,000 SAR

Scope of Work:



- ◆ Construction of 7 Nos. of Substation Buildings, CCR Building, Process Interface Building, Operation Tower, and other associated structures on a turnkey basis
- ◆ Complete scope of civil, mechanical, and electrical works
- ◆ Civil and structural works (earthworks, foundations, concrete, backfilling, structural framing)
- ◆ Architectural finishing (blockwork, plastering, painting, tiling, doors, windows, roofing)
- ◆ Mechanical works (HVAC systems, piping, plumbing, firefighting, equipment installation)
- ◆ Electrical and Instrumentation (E&I) works (power distribution, cable laying, panels, lighting, instrumentation, grounding, testing & commissioning)
- ◆ External and infrastructure works (asphalt, curbstone, interlock, drainage, road works, fencing, site development)



10

Shaybah Package GOSP (1,2,3,4) Civil Works.

Name of Owner: SAUDI ARAMCO

Main Contractor: SAMSUNG Engineering

Project: PC

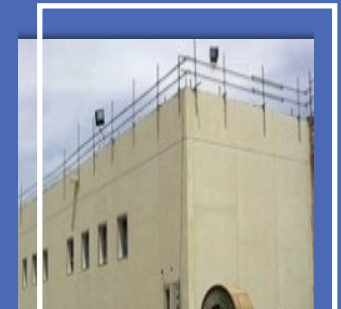
Project Duration: 3 Years

Value: 109,512,817 SAR

Scope of Work:



- ◆ Construction of Building Works for GOSP (1, 2, 3 & 4)
- ◆ Scope includes complete civil, structural, architectural, mechanical, and electrical works
- ◆ Civil and structural works (earthworks, foundations, concrete, backfilling, superstructure)
- ◆ Architectural finishing (blockwork, plastering, painting, tiling, doors, windows)
- ◆ Mechanical works (HVAC, plumbing, firefighting, equipment installation)
- ◆ Electrical and Instrumentation (E&I) works (cable laying, lighting, panel installation, grounding, testing & commissioning)
- ◆ External and infrastructure works (roads, interlock, curbstone, drainage, site development)
- ◆ **Note:** Major materials such as ready-mix concrete and reinforcement steel are provided by Samsung



11

SAW Pipe Mill

Name of Owner: Arabian Pipes Company

Main Contractor: McLellan/U.K.

Project: PC

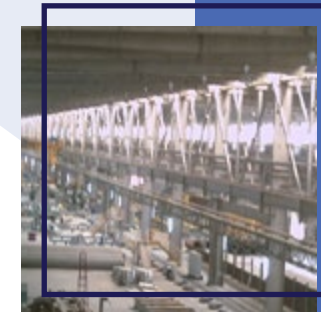
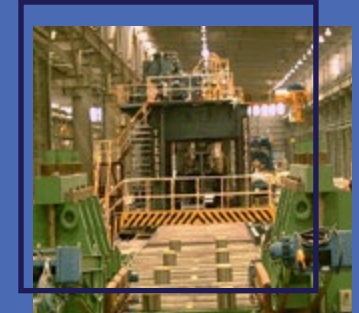
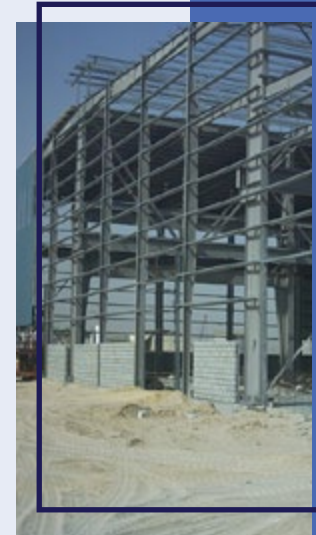
Project Duration: 2 Years

Value: 134,700,000 SAR

Scope of Work:



- ◆ Construction of SAW Mill Pipe Factory including all associated civil and external works
- ◆ Scope includes complete civil, structural, and architectural works for the factory buildings and support facilities
- ◆ Civil and structural works (earthworks, foundations, concrete structures, backfilling, superstructure)
- ◆ Architectural finishing (blockwork, plastering, painting, tiling, doors, windows)
- ◆ External works (roads, interlock, curbstone, drainage, site development, fencing, and utilities connections)
- ◆ Coordination with other disciplines to ensure integration with mechanical and electrical systems
- ◆ Electrical and instrumentation
- ◆ Equipment Erection
- ◆ Chilled Water System





+966138458092



www.kamcosaudi.com



BDM@kamcosaudi.com



KSA - Al Khobar, King Abdulaziz
Road, Al-Rakah Al-Janoubia



[@KAMCO_Saudi](https://twitter.com/KAMCO_Saudi)



KAMCO for General Contracting